

2 Hurford Place East Lismore

Table of Contents

- | [Property Details](#)
- | [Photo Gallery](#)
- | [Map](#)
- | [Contact For Inspection](#)

Property Details

2 Hurford Place, East Lismore



SOLD BY THE WAL MURRAY TEAM

3  **2**  **3** 

Spotless presentation. Brick and tile master-built residence in quiet and convenient East Lismore position.

- 3 Bedrooms
- 2 Bathrooms
- 3 Garages
- Deck
- Built In Robes

The home features tiled front patio, spacious lounge room that flows to a patio with newly tiled and glass balustrade railing, capturing lovely north easterly views and pleasant breezes. The all-electric renovated kitchen with rangehood, pantry plus dining area and air conditioning. There are three bedrooms, all with built in robes and new carpet. Renovated bathroom and separate toilet.

Upstairs has new ceiling fans throughout, new vinyl plank flooring plus new blinds, new aluminium windows, new security screens and all new led lighting. Off the laundry is a covered private patio, fully fenced allotment and landscaped garden/grounds with lawn locker.

Internal stairs to renovated rumpus room, renovated 2nd shower/toilet and storage/workshop area plus double garage (remote doors) and 3rd car/utility area.

The home has been fully painted inside and out. Positioned close to schools, golf club, shopping centres and buses close.

Established location. Quiet cul-de-sac position.

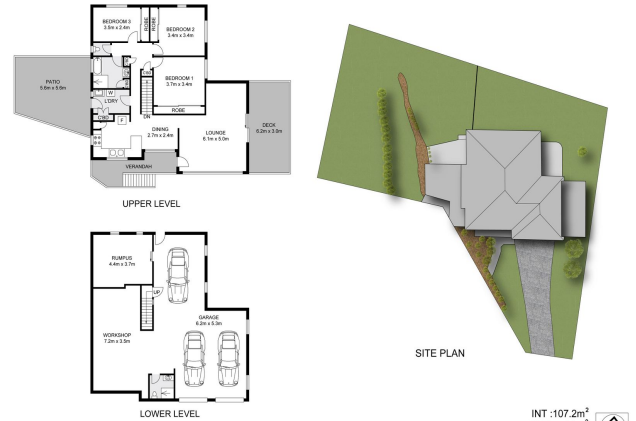
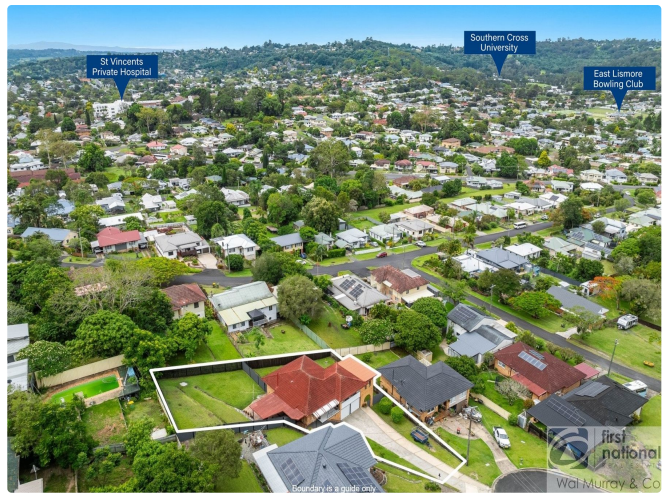
Phone Gerald 0408666899 for your early inspection.

\$699,500

Photo Gallery



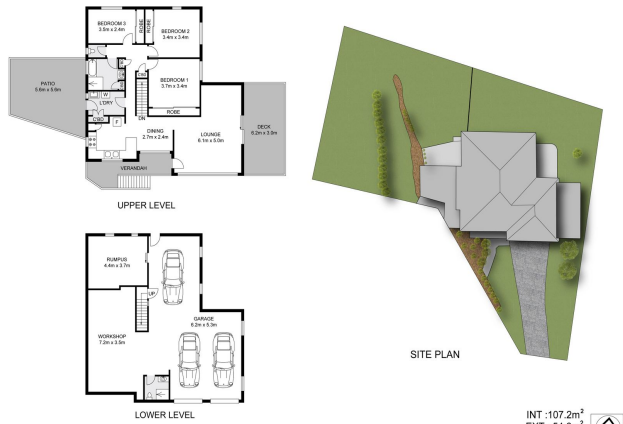




INT: 107.2m²
 EXT: 54.6m²
 WORKSHOP/ GARAGE : 113.2m²

Dimensions are approximate. All information contained herein gathered from sources we believe to be reliable. However we cannot guarantee its accuracy and interested persons should rely on their own enquiries @ visionmedia.vision 2024.

2 Hurford Place, East Lismore



INT: 107.2m²
 EXT: 54.6m²
 WORKSHOP/ GARAGE : 113.2m²

Dimensions are approximate. All information contained herein gathered from sources we believe to be reliable. However we cannot guarantee its accuracy and interested persons should rely on their own enquiries @ visionmedia.vision 2024.

2 Hurford Place, East Lismore

Map



Contact For Inspection



GERALD POLLARD

LICENSED REAL ESTATE AGENT

0408 666 899

gerald@walmurray.com.au